

Specifications

Models	SX-180	
Measurements	US	Metric
Working height maximum*	186 ft	56.69 m
Platform height maximum	180 ft	54.86 m
Horizontal reach maximum	80 ft	24.38 m
Below ground reach	2 ft	0.61 m
A Platform length	3 ft	0.91 m
B Platform width	8 ft	2.44 m
C Height - stowed	10 ft	3.05 m
D Length - stowed	47 ft	14.33 m
Length - transport (jib tucked under)	42 ft 7 in	12.98 m
E Width - axles retracted	8 ft 2 in	2.49 m
Width - axles extended	16 ft 6 in	5.03 m
F Wheelbase - axles retracted	16 ft 6 in	5.03 m
Wheelbase - axles extended	15 ft 6 in	4.72 m
G Ground clearance - center	1 ft 3 in	0.38 m

Productivity

Lift capacity	750 lb	340 kg
Platform rotation	160°	
Vertical jib rotation	135°	
Horizontal jib rotation	180°	
Turntable rotation	360° continuous	
Turntable tailswing - axle retracted	3 ft 9 in	1.14 m
Turntable tailswing - axle extended	3 ft 6 in	1.06 m
Drive speed - stowed	2.5 mph	4.02 km/h
Drive Speed - out of stowed		
below 125 ft (38.1 m)	0.4 mph	0.65 km/h
above 125 ft (38.1 m)	0.1 mph	0.17 km/h
Gradeability - stowed	35%	
Turning radius - axle retracted: inside	20 ft 7 in	6.28 m
outside	28 ft 1 in	8.56 m
Turning radius - axle extended: inside	9 ft 11 in	3.02 m
outside	24 ft 1 in	7.34 m
Controls	12 V DC proportional	
Tires	445/65D 22.5 18 ply foam-filled	

Power

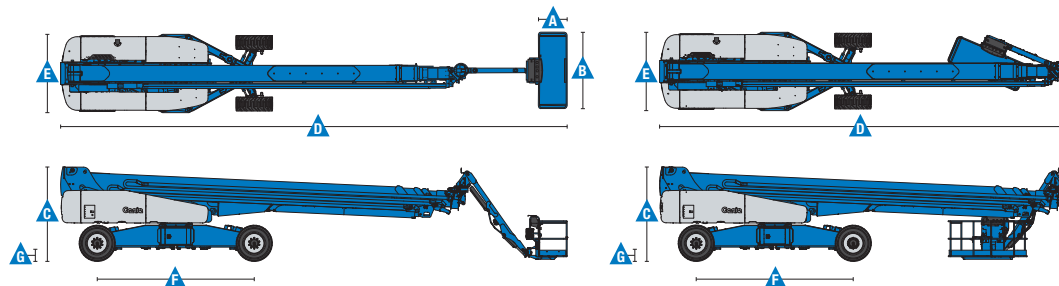
Power source	Deutz Diesel TD 2011 L04i 4 cylinder turbo diesel, 74 hp (55 kW) Perkins Diesel 1104D-44T 4 cylinder turbo diesel, 74 hp (55 kW)
Auxiliary power unit	12 V DC
Hydraulic tank capacity	110 gal 246.1 L
Fuel tank capacity	50 gal 189.3 L

Weight***	54,000 lbs 24,494 kg
-----------	---------------------------

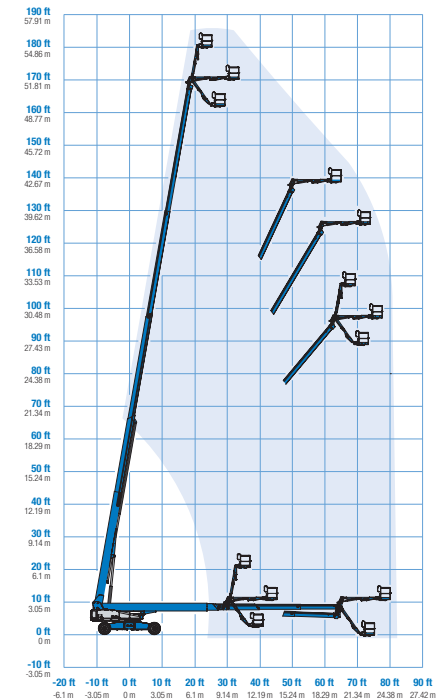
Standards Compliance

ANSI A92.5, CSA B354.4, EN 280, AS 1418.10

* The metric equivalent of working height adds 2 m to platform height. U.S. adds 6 ft to platform height.
 ** Gradeability applies to driving on slopes. See operator's manual for details regarding slope ratings.
 *** Weight will vary depending on options and/or country standards.



Range Of Motion SX-180



Features

Standard Features

Productivity

- Self-leveling platform
- 160° Hydraulic platform rotation
- Fully proportional Hall effect joystick controls
- Hydraulic oil cooler
- Drive enable at full height
- AC power cord to platform
- Horn
- Hour meter
- Tilt alarm
- Descent alarm
- Alarm package
- 360° continuous turntable rotation
- Positive traction drive
- Two speed wheel motors
- Ground control box cover
- Engine status display
- 10 ft (3.05 m) rotating jib

Power

- 7.5 kW generator
 - 208V/120V/60Hz (North America)
 - 415V/240V/50Hz (Europe & Australia)
 - 110V/55V/50Hz (UK)
- 12 V DC auxiliary power
- Anti-restart engine protection
- Auto engine fault shutdown
- Engine Monitor Display

Easily Configured To Meet Your Needs

Platform Options

- Steel 8 ft (2.44 m) (standard)
- 8 ft (2.44 m) tri-entry

Engine Options

- Deutz turbo diesel 74 hp (55 kW)
- Perkins turbo diesel 74 hp (55 kW)

Drive/Steer

- 4WD (standard)
- 4WS (standard)

Axle

- Extendable axles (standard)

Tires

- Rough terrain foam-filled (standard)
- Rough terrain solid

Options & Accessories

Productivity Options

- Half mesh platform inserts with swing gate
- Platform top auxiliary rail
- Arc Pro 275™ Heavy-Duty Welder package
- Hostile environment package
- Thumb rocker steer
- Tool tray
- Work light package with drive lights
- Biodegradable Hydraulic Oil
- Airline to Platform
- Entry toe boards
- Anemometer
- Lockable platform control box cover

Power Options

- AC generator 208V/110V/60Hz 12.5 kW
- Cold Weather Package
- Diesel scrubber/spark arrestor muffler (catalytic muffler)
- Intake air pre-cleaner



Genie United States

18340 NE 76th Street
P.O. Box 97030
Redmond, Washington 98073-9730
Telephone +1 (425) 881-1800
Toll Free in USA/Canada +1 (800)-536-1800
Fax +1 (425) 883-3475

Genie Europe

The Maltings
Wharf Road
Grantham NG31 6BH
UK
Telephone +44 (0)1476 584333
Fax +44 (0)1476 584334
Email: AWP-InfoEurope@terex.com

Distributed By: