



TH255

Telehandler



SPECIFICATIONS

Engine

Model	Cat® C4.4 Tier III DIT	
Rated Speed	2,200 rpm	
Displacement	4.4 L	268.4 cu in
Gross Power (Max)	63 kW	84 hp

Weights

Operating Weight with Carriage and Forks	4899 kg	10,800 lb
--	---------	-----------

Operating Specifications

Rated Load Capacity	2500 kg	5,500 lb
Maximum Lift Height	5.6 m	18 ft 4 in
Maximum Forward Reach	3.25 m	10 ft 10 in
Top Travel Speed	26 kph	16 mph
Capacity at Max Height	2000 kg	4,400 lb
Capacity at Max Reach	839 kg	1,850 lb
Turning Radius over Tires	3200 mm	126 in

Hydraulic System — Implement

Gear Pump	Single-section	
Auxiliary Circuit Operating Pressure	24 821 kPa	3,600 psi
Auxiliary Hydraulic Flow at Boom Head	20 gpm	

- Auxiliary Hydraulic Circuit used for all attachments equipped with cylinders or other hydraulic components. Consists of valves, controls, and hydraulic lines.

Service Refill Capacities

Fuel Tank	106 L	24 gal
Hydraulic System	64 L	17 gal

Work Tools

Standard Tilt Carriage	1219 mm	48 in
Side Tilt (Rotate) Carriage	1219 mm	48 in
Pallet Forks	(2) 1219 mm, 51 mm x 102 mm	(2) 48 in, 2 in x 4 in
Lumber Forks	(2) 1524 mm, 38 mm x 152 mm	(2) 60 in, 1.5 in x 6 in
Cubing Forks	(2) 1219 mm, 51 mm x 51 mm	(2) 48 in, 2 in x 2 in
Light Material Bucket	1.7 cu yd	72 in (1.8 m)
General Purpose Bucket	1.0 cu yd	73 in (1.85 m)
Grapple Bucket	1.0 cu yd	72 in (1.8 m)
Crane Hook	2500 kg	5,500 lb

Tires

Standard	12.00 x 16.5	
Optional	14.00 x 17.5	

Transmission

Transmission	Hydrostatic	
Forward	Variable Speed	
Reverse	Variable Speed	

Boom Performance

Boom Up	6.2 Seconds	
Boom Down	4.3 Seconds	
Tele In	3.4 Seconds	
Tele Out	6.3 Seconds	
Drawbar Pull (Loaded)	3946 kg	8,700 lb

Axles

- Planetary on front and rear axles.
- High bias limited slip differential on front axle.

Brakes

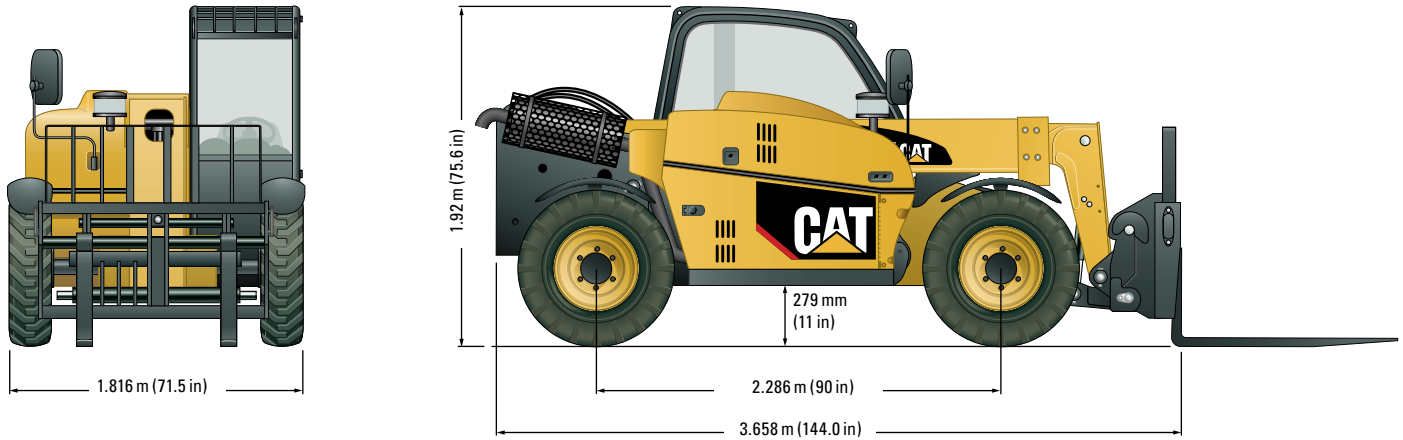
- Service Brakes are inboard wet disc brakes on front axles.
- Parking Brakes are wet disc spring-applied hydraulic release. Light on dash indicates when brake is on.

Instruments

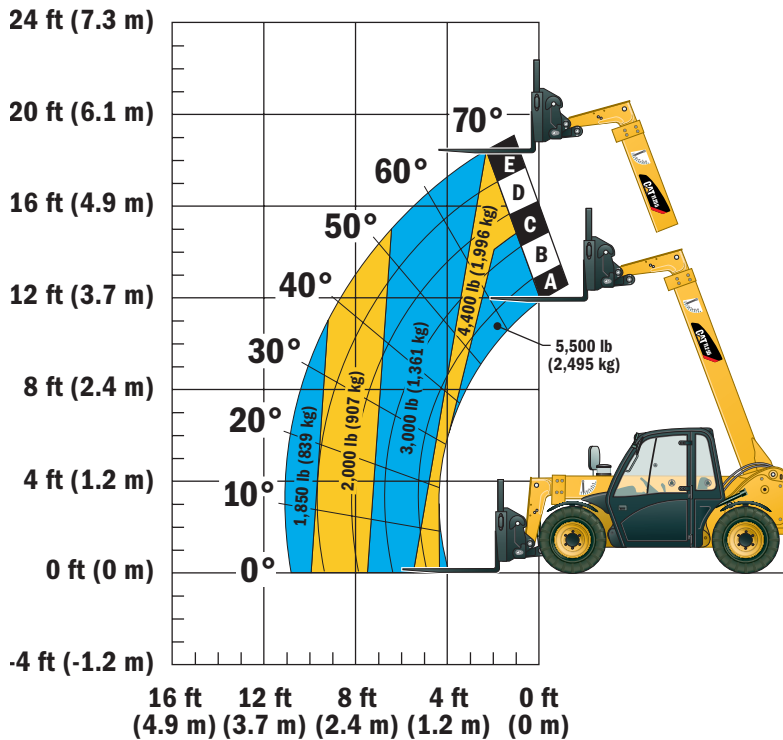
- Indicators for machine hours, fuel-level, steer mode, steering pressure, battery charge, coolant temperature, parking brake and engine pre-heat.
- Reverse motion alarm.
- Panel and switches are illuminated for night operation.

Dimensions

All dimensions are approximate.



Load Chart and Dimensions



IMPORTANT

Rated lift capacities shown are with machine equipped with carriage and pallet forks. The machine must be level on a firm surface with undamaged, properly inflated tires. Machine specifications and stability are based on rated lift capacities at specific boom angles and boom lengths. (If specifications are critical, the proposed application should be discussed with your dealer.)

DO NOT exceed rated lift capacity loads, as unstable and dangerous machine conditions will result.

DO NOT tip the machine forward to determine the allowable load.

Use only JLG approved attachments with proper material handler model/attachment load capacity charts displayed in the operator's cab. OSHA requires all rough terrain forklift operators be trained according to OSHA 29 CFR 1910.178 (1).

Due to continuous product improvements, machine specifications and/or equipment changes may be made without prior notification. This machine meets or exceeds ANSI/ITSDF B56.6-2005 as originally manufactured for intended applications.

